



MEGA Education Program 2023-24

Description and Delivery process

“ Educating **tomorrow's professionals** with a practical approach to **HOPEX software** ”

Objectives of the program:

- Raise **awareness**, together with School/Universities about MEGA and HOPEX
- Deliver **accessible ready-to-use licenses** for students and researchers to work and practice on a software



Explore



Practice



Adopt

Who is it for?

- School and Universities in the areas of **IT, Enterprise Architecture, Management, Engineering** etc.

MEGA Education Program

“ Educating **tomorrow's professionals** with a practical approach to **HOPEX software** ”

	CLOUD TRIAL	ON PREMISE
USERS	1 to 20 concurrent licences	Unlimited concurrent licences – (20 simultaneous connections)
KEY FEATURES	1 environnement and 1 repository per user	1 environment and 1 repository per user
DURATION	2 months	1 year (renewable)
SUPPORT	1 key user – access to community	1 key user– access to community
COST	Free	Free
E-Learning Access	1 access to MEGA training material for 1 month	1 access to MEGA training material for 1 month

MEGA Education Program

“

Supporting Enterprise Architecture
educational programs and hiring young
professionals

”

Beyond HOPEX:

- **Conferences, best practices and courses** can be occasionally held by our consultants
- **Building** Curriculums and **endorsing** course contents

Reach out to us : megauniversity@mega.com

Licenses Description



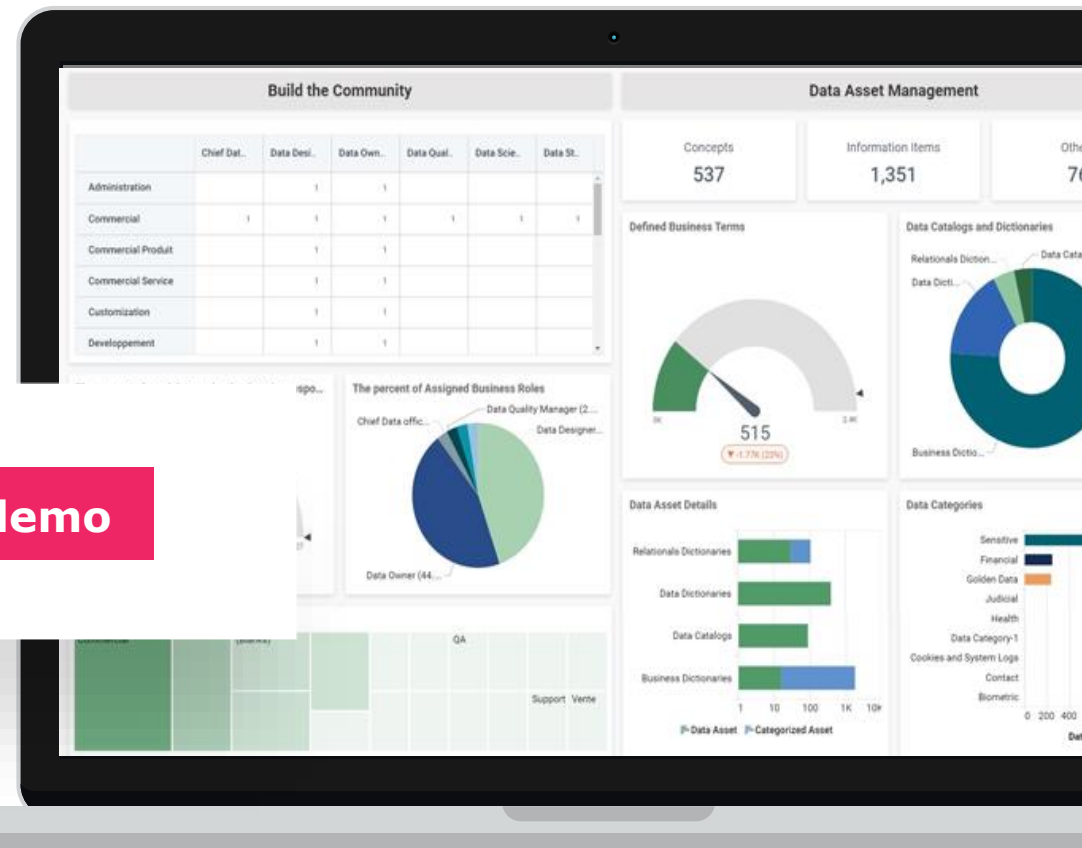
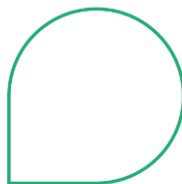
● Products: All offering now available

Core Products:

- HOPEX Business Process Analysis
- HOPEX Data Governance
- HOPEX Information Architecture
- HOPEX Integrated Risk Management
- HOPEX Internal Audit
- HOPEX IT Architecture
- HOPEX IT Portfolio Management
- HOPEX IT Business Management
- HOPEX Privacy Management

Contact us for other Products:

- HOPEX Application Design
- HOPEX for the ArchiMate framework
- HOPEX DoDAF
- HOPEX Explorer
- HOPEX NAF
- HOPEX Power Supervisor
- HOPEX Power Studio
- ...



[Start demo](#)



M E G A
SEE THE BIGGER PICTURE

